

# Add frequently used Commands to Quick Access Toolbar for Easy Access

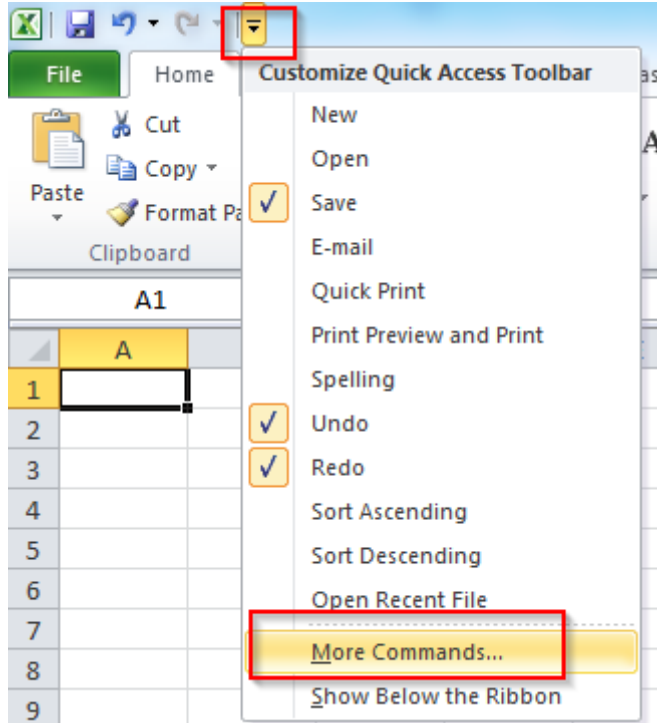
We use some commands of Excel more often than others. Quick Access Toolbar provides us easy access of most frequently used commands. Excel also provides a feature of customization of Quick Access Toolbar. Here is the way to customize and create your own customized toolbar.

Follow these steps to customize the Quick Access Toolbar in the ribbon.

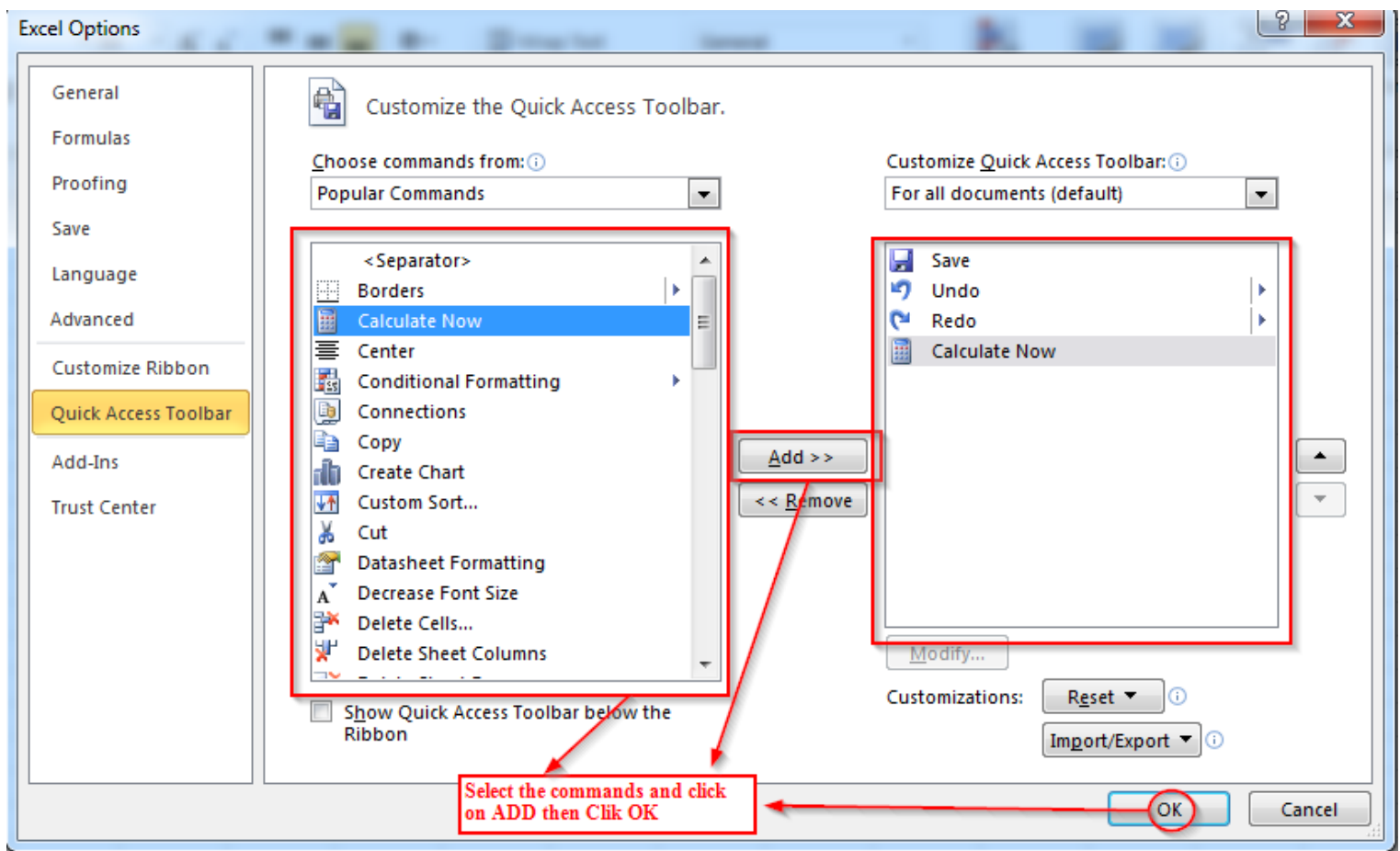
1. Quick Access Toolbar is the bar at the top of Excel above the ribbon.



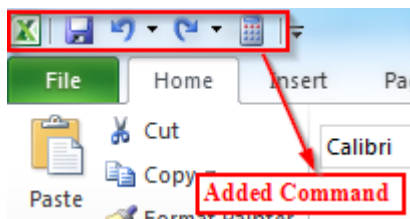
2. Click on the Down Arrow and select **More Commands**.



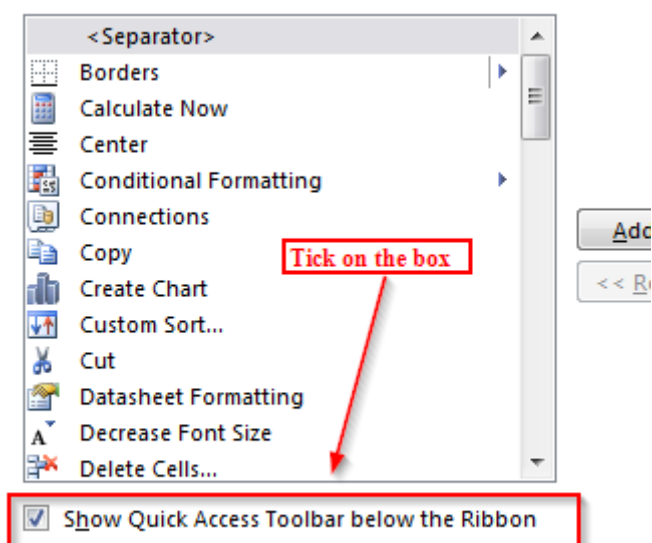
3. In the Excel Options dialog box, select **Quick Access Toolbar**. Then select commands from the left side and add them to the right side box. Click OK.



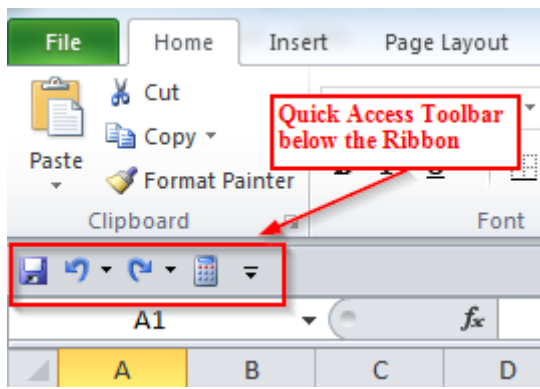
4. You can see that Quick Access Toolbar is now customized with you added command.



5. If you want to display Quick Access Toolbar below the Ribbon, click on the checkbox as shown in



6. Quick Access Toolbar is shown below the Ribbon.



Quick Access Toolbar  
below the Ribbon

**[Explore more, It's Amazing...](#)**

**[How to Customize Ribbon in excel 2010?](#)**

**[10 Best Tips to Format your data quickly](#)**

**[Impress your boss using Pivot Chart](#)**